



Kensington House, Prince of Wales Drive
3 Palmer Road SW11

GARTON JONES.COM



Kensington House, Prince of Wales Drive 3 Palmer Road, SW11

GARTON JONES.COM

9 Albert
Embankment
London
SE1 7SP

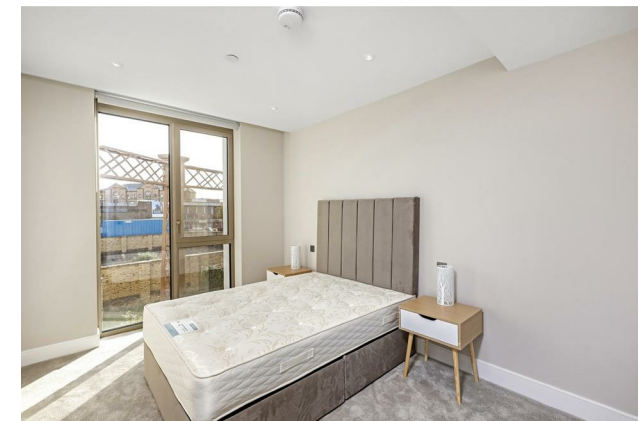
Sales +44 (0) 20 7735 1888
nineelms@gartonjones.com
www.gartonjones.com

£1,125,000 Leasehold

A fantastic 2 double bedroom apartment of 870sq.ft (80sq.m) with secure parking available in Kensington House, Prince of Wales Drive, a very popular new build development by St William in Nine Elms & Battersea, close to the banks of the River Thames, Battersea Park, and the new Battersea Power Station Tube Extension. This spacious property further benefits from an open plan reception room with a smart integrated kitchen, a spacious balcony, 2 luxury bathrooms (1 en-suite) and good storage including fitted wardrobes to both bedrooms. There is floor to ceiling windows in all principal rooms providing good natural light with an East facing aspect. Residents have the use of a 24-hour concierge and access to a host of onsite facilities including a resident's roof terrace, swimming pool, spa, and sauna facilities. You will be a few minutes' walk from the excellent transport services of Battersea Park, Queens Town Road and The Power Station as well as all the on-site amenities of the Power Station with the shopping centre set to open September 2022. Battersea Park, one of London's best green spaces, is also less than a 5 minutes' walk away from Prince of Wales Drive.

Leasehold: 999 Years from 1 January 2019
Service Charge: Approx. £4,000 per annum
Ground Rent: £750 per annum

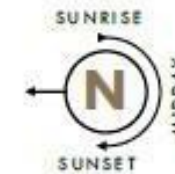
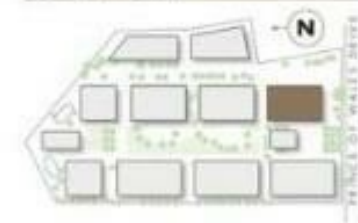
- 870sq.ft (80sq.m)
- Parking
- East Aspect
- 24 Hour Concierge
- Residents Swimming Pool with Sauna & Steam Room
- Communal Roof Gardens
- Moments from Battersea Power Station Tube Station
- Battersea Park is a Short Walk Away
- Wandsworth Council Tax Band F



EPC certificate available on request.



LOCATION



870 sq.ft / 80sqm

